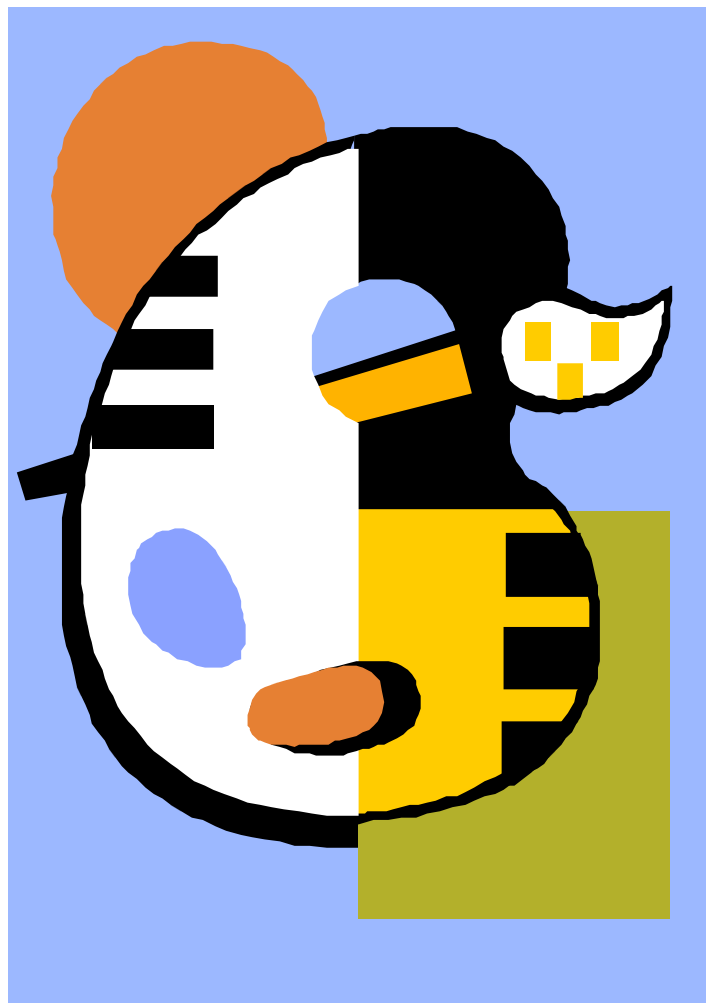


Art



# GUIDELINES FOR: ART PROJECTS

## CLASSIFICATION OF ENTRIES:

Works will be divided into two categories:

### 1. Two-dimensional Classification.

- Oil paintings, acrylic and all newly developed plastic paints.
- Watercolor painting (transparent or opaque tempera, gouache, or casein). Must be matted in white, off-white, gray, or black.
- Drawings rendered in pencil, ink, charcoal, pastel, or crayon. Must be matted in white, off-white, gray, or black.
- Photography must be composed, photographed, developed, and printed by the student. Must be matted in white, off-white, gray, or black.
- Printmaking (any form of creative print). Must be matted in white, off-white, gray, or black.
- Other media, including: graphic designs, calligraphy, mixed media, or collage (materials not to project more than a quarter of an inch from the surface of the work).
- Fiber or fabric art (batik, printed or dyed textiles, etc.)

### 2. Three-dimensional Classification.

- Ceramics, including: bowls, vases, bottles made from clay and kiln-fired, glazed or unglazed, stressing originality. May be wheel thrown and hand built.
- Sculpture and other 3-D works, including: modeled, carved, cast or assembled, in the round or relief, jewelry, and objects or wood, leather, papier mache, etc.
- Fiber or fabric art, weaving, stitchery and hooking.

GUIDELINES FOR SUBMITTING ENTRIES:

1. All paintings, drawings, prints and other works on paper must be matted or mounted securely. Use heavy paper to reinforce back. (*Exceptions: oil and acrylic paintings on stretched canvas, canvas board, or poster board.*) **Mats must be white, off-white, gray, or black. DO NOT USE COLORED MATS, FRAMES, OR GLASS ON ENTRIES.** (Stretch canvas works may have standard lattice strip framing).
2. **Projects cannot exceed 36" in any direction including the matting for two-dimensional exhibits or the base of three-dimensional exhibits.** (*Exception: Quilts will not be restricted to size.*)
3. **For photography, prints must be enlarged to at least 5 x 6 inches. Each must be on white, off-white, gray, or black mat or mount.**

NOTE: CEDAR assumes no responsibility for loss, damage, or breakage. In a project of this scope, entrants who submit breakable objects should understand that they do so at their own risk.

\* \* \* \* \*

**Projects that do not meet all guideline limitations will not be considered for the awards program. (Guideline limitations are shown in bold print).**

\* \* \* \* \*

**SCORING SHEET  
ART**

**PROJECT NO.**

	<u>Points Available</u>	<u>Points Awarded</u>
<b>RELEVANCE TO COAL</b>	25	_____
<b>CREATIVITY</b>	15	_____
<b>ORIGINALITY</b>	25	_____
<b>USE OF MEDIUM</b>	15	_____
<b>APPEARANCE</b>	15	_____
<b>AGE/GRADE LEVEL APPROPRIATE</b>	5	_____
<b>TOTAL POINTS AWARDED</b>		_____

**REMARKS:**

---

---

---